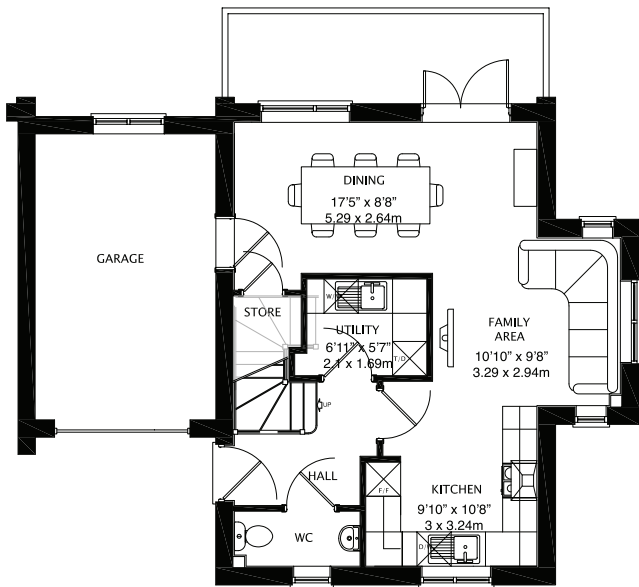


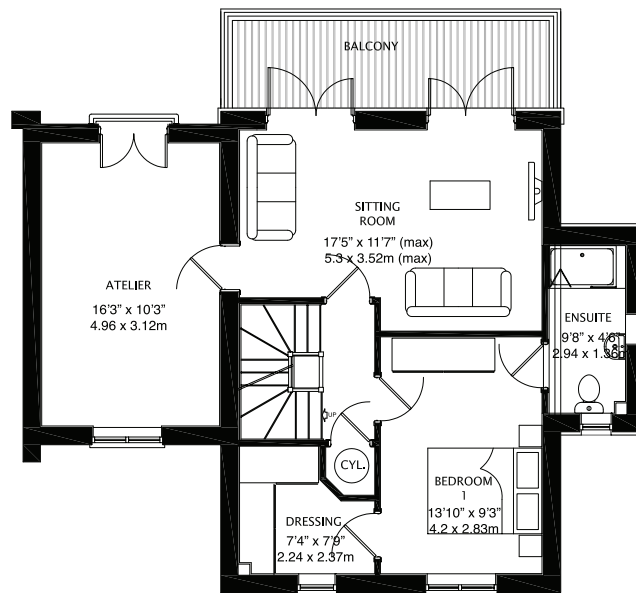
# Easington - 4 Bedroom House (1,607 sq.ft.)



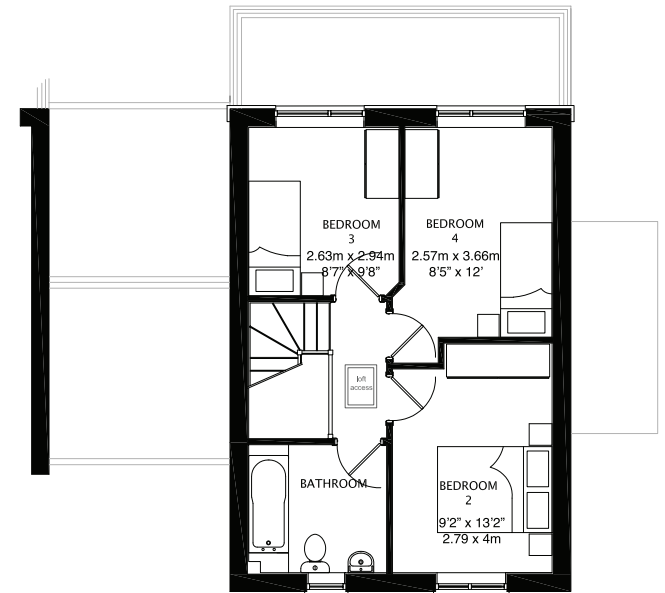
# Easington - 4 Bedroom House (1,607 sq.ft.)



Ground Floor Layout



First Floor Layout



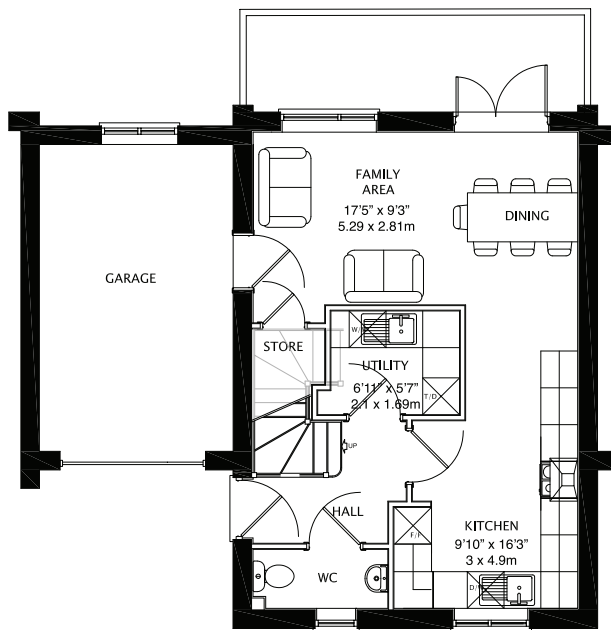
Second Floor Layout

MISREPRESENTATION ACT: Greenhaven Homes Ltd and Rosedale and Jones Real Estate Limited for themselves and for the vendors or lessors of this property, whose agents they are give notice that: a) all particulars are set out as general outline only for the guidance of intending purchasers or lessees, and do not comprise part of an offer or contract: b) all descriptions, dimensions, references to condition and necessary permissions for use and occupation, and other details are given in good faith and are believe to be correct but any intending purchasers or tenants should not rely on them as statements or representations of fact but must satisfy themselves by inspection or otherwise as to the correctness of each of them. c) no person in the employment of Greenhaven Homes Ltd and Rosedale and Jones Real Estate Limited has any authority to make any representation of warranty whatsoever in relation to this property.

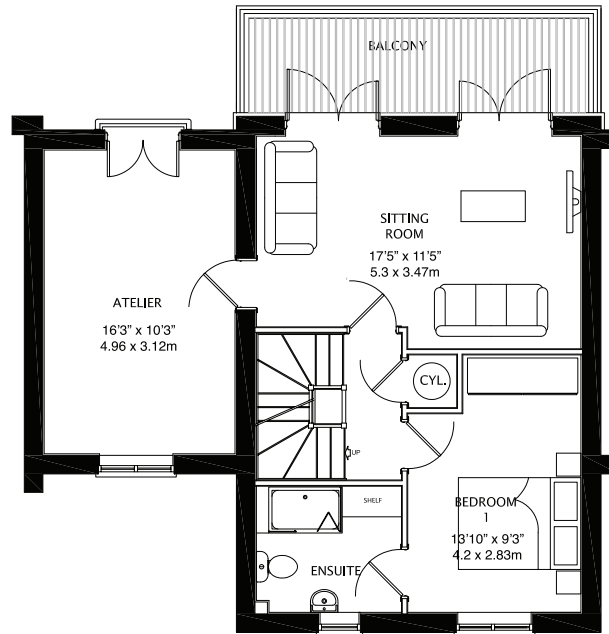
# Stanhope - 4 Bedroom House (1,514 sq.ft.)



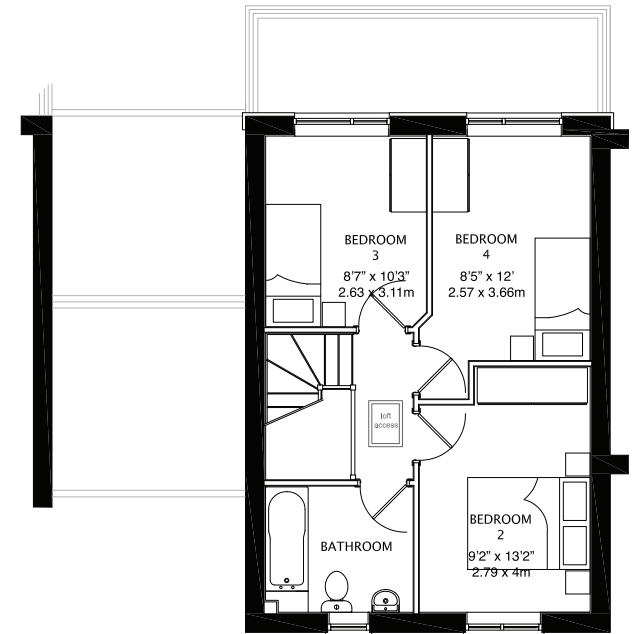
# Stanhope - 4 Bedroom House (1,514 sq.ft.)



Ground Floor Layout



First Floor Layout



Second Floor Layout

MISREPRESENTATION ACT: Greenhaven Homes Ltd and Rosedale and Jones Real Estate Limited for themselves and for the vendors or lessors of this property, whose agents they are give notice that: a) all particulars are set out as general outline only for the guidance of intending purchasers or lessees, and do not comprise part of an offer or contract: b) all descriptions, dimensions, references to condition and necessary permissions for use and occupation, and other details are given in good faith and are believe to be correct but any intending purchasers or tenants should not rely on them as statements or representations of fact but must satisfy themselves by inspection or otherwise as to the correctness of each of them. c) no person in the employment of Greenhaven Homes Ltd and Rosedale and Jones Real Estate Limited has any authority to make any representation of warranty whatsoever in relation to this property.